

PRODUCT OVERVIEW BLUEHUB UC

Your Ultimate Solution for
Seamless Telephony



WHAT IS BLUEHUB UC?

Welcome to one of the most economic workflow improvements in communication technology.

Bluehub UC, one of the world's most advanced IP PBX Professional Telephony Platforms, stands as a mighty and innovative tool that has been empowering businesses and governments for over two decades. This mature and well-established solution has consistently elevated operational efficiency and communication dynamics.



BLUEHUB UC TELEPHONY PLATFORM

Bluehub UC is the world's first and most mature IP PBX Professional Open Standards Turnkey Telephony Platform. Since 2004, Bluehub UC has deployed flexible, reliable, and scalable New Generation Communication Systems to SMBs, enterprises, and governments worldwide by unifying the most advanced of latest technologies.

Bluehub UC is offered in the Business, Contact centre, and Multi-Tenant Editions, each supporting specific features maximizing performance, reliability, and expandability.



TAILORED EDITIONS FOR ENHANCED PERFORMANCE

EMBARK ON A JOURNEY OF EXCELLENCE WITH BLUEHUB UC'S SPECIALIZED EDITIONS, SHOWCASING COMMITMENT TO PERFORMANCE, RELIABILITY, AND GROWTH FOR DIVERSE BUSINESS LANDSCAPES.

Business Edition

Bluehub UC Business Edition is designed for small to medium-sized businesses, offering unique deployment options (hosted or on-premise) and key features such as hotdesking and data archival.

Contact centre Edition

The Contact centre edition enhances workflow for agents and supervisors in call centres, aiming to boost customer experience. It offers organized information and improved management options to handle call volumes efficiently, reducing customer wait times.

Multi-Tenant Edition

Streamline communication for multiple customers on one platform, improving efficiency and reducing costs by maintaining separate communication channels for each tenant.

SP Edition

The SP Edition simplifies administration and configuration management for service providers, ensuring efficient service delivery and quick adjustments to meet customer needs.



Essential Bluehub UC Features & Benefits



EFFORTLESS SETUP
WITH GUIDED
PRECISION



INSIGHTFUL DASHBOARD
FOR SEAMLESS
NAVIGATION



BRANDING: A
PERSONAL TOUCH



ENHANCED SECURITY
AND MANAGEMENT
WITH ACTIVITY LOGS



SEAMLESS CALL
RECORDINGS
PLAYBACK



EFFICIENT
ONBOARDING WITH
EMBEDDED
DOCUMENTATION



STIR/SHAKEN CALL
SIGNING



ENHANCED DEVICE
CERTIFICATE
VALIDATION



CRM Integrations

Bluehub UC integrates with key business applications such as Salesforce, SugarCRM, Zendesk, ZOHO, MS Dynamics, and others to enhance communication and streamline operations.



HOSTED OR ON-PREMISE: YOUR CHOICE, OUR EXPERTISE

HOSTED SOLUTION: SIMPLIFY, EXPAND, THRIVE

Choose hosted deployment for ease without hardware concerns. We manage infrastructure for growth, making user additions easy and cost-effective. Enjoy simplicity without compromise.

ON-PREMISE EMPOWERMENT: TOTAL CONTROL, STRONG SECURITY

Select the on-premise solution for full server and data control, enhanced security, and in-house communication management. Benefit from expert support for seamless implementation regardless of your choice.





DASHBOARD

The dashboard section gives you an overview of vital Bluehub UC information. It displays hardware usage, main services status, system information, and Bluehub UCs licensing as well as the number of Total calls, Answered calls, SIP registration, etc.

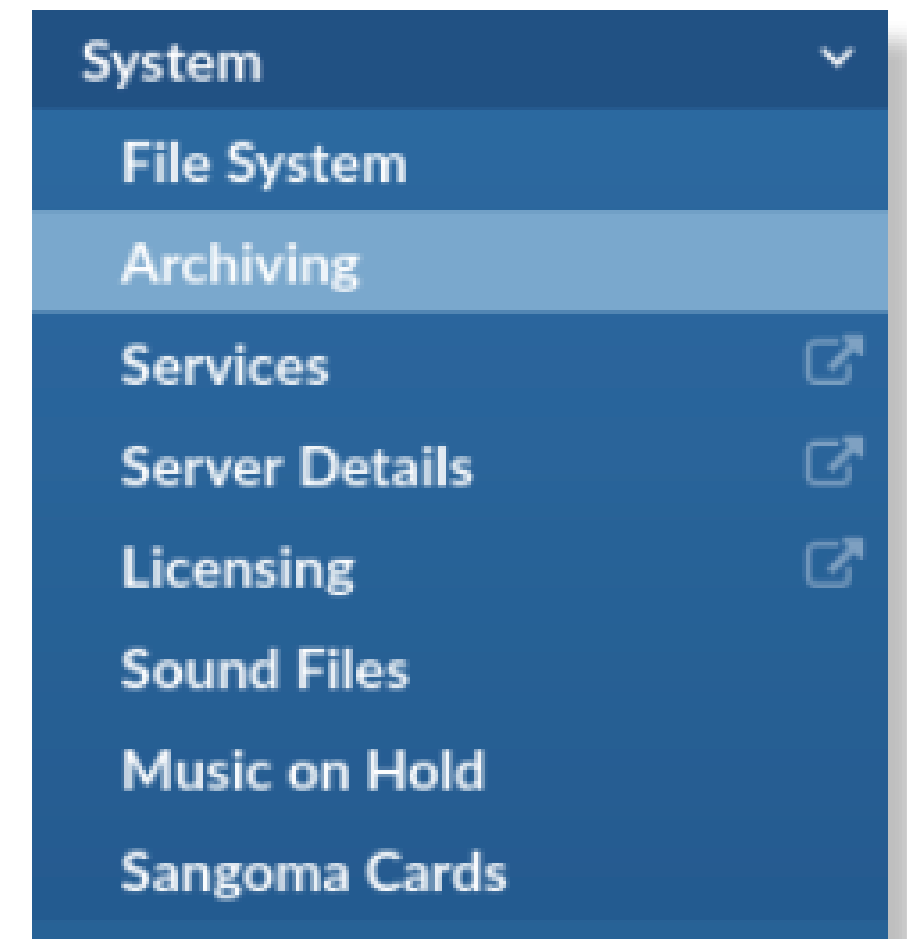
BRANDING

Branding allows you to customize Bluehub UC GUI with your company logos and/or colors.

ARCHIVING

The Archiving feature can be used to keep your recordings, voicemails, and FAXes in a remote location. This feature can be configured to run automatically at certain times (daily, weekly) or at specified hour intervals. Moving local files to a remote location is now also possible by using Secure File Transfer Protocol (SFTP), which is added to the list of already existing Clients, Google Drive, Amazon S3, FTP, and Dropbox.

In addition, Bluehub UC v6.4 brings support for Bluehubcloud Archiving Storage Service (BAS). BAS is an archiving storage solution that is to be integrated with the Bluehub UC web console UI for simplified administration of S3 compatible storage for Bluehub UC instances running on Bluehub UC for archiving recordings, CDRs, faxes, and other data of interest.



ONLINE SELF CARE

The Online Self Care portal allows the end-user to modify their extension settings according to assigned permissions. Users can edit Enhanced Services settings, set up voicemail behavior, check CDRs, download call recordings, etc.

ACTIVITY LOG

You can now track the date, time, and activity of each user to improve time management and increase productivity. Knowing who accessed various files and made changes to the server can increase security and give you a greater insight into how your business operates.

RECORDINGS

The Bluehub UC interface has integrated a call recordings player, allowing users to listen to Bluehub UC call recordings directly from their browser and navigate through the recordings with a simple click of a mouse.



USE YOUR EXISTING IP PHONES

Bluehub UC is compatible with most IP Phones on the market. Use the same extension on multiple devices. Save time for both your IT personnel and your users by using features such as automated provisioning, busy lamp field (BLF), hot desking, and more.



APPLICATION PROGRAMMING INTERFACE

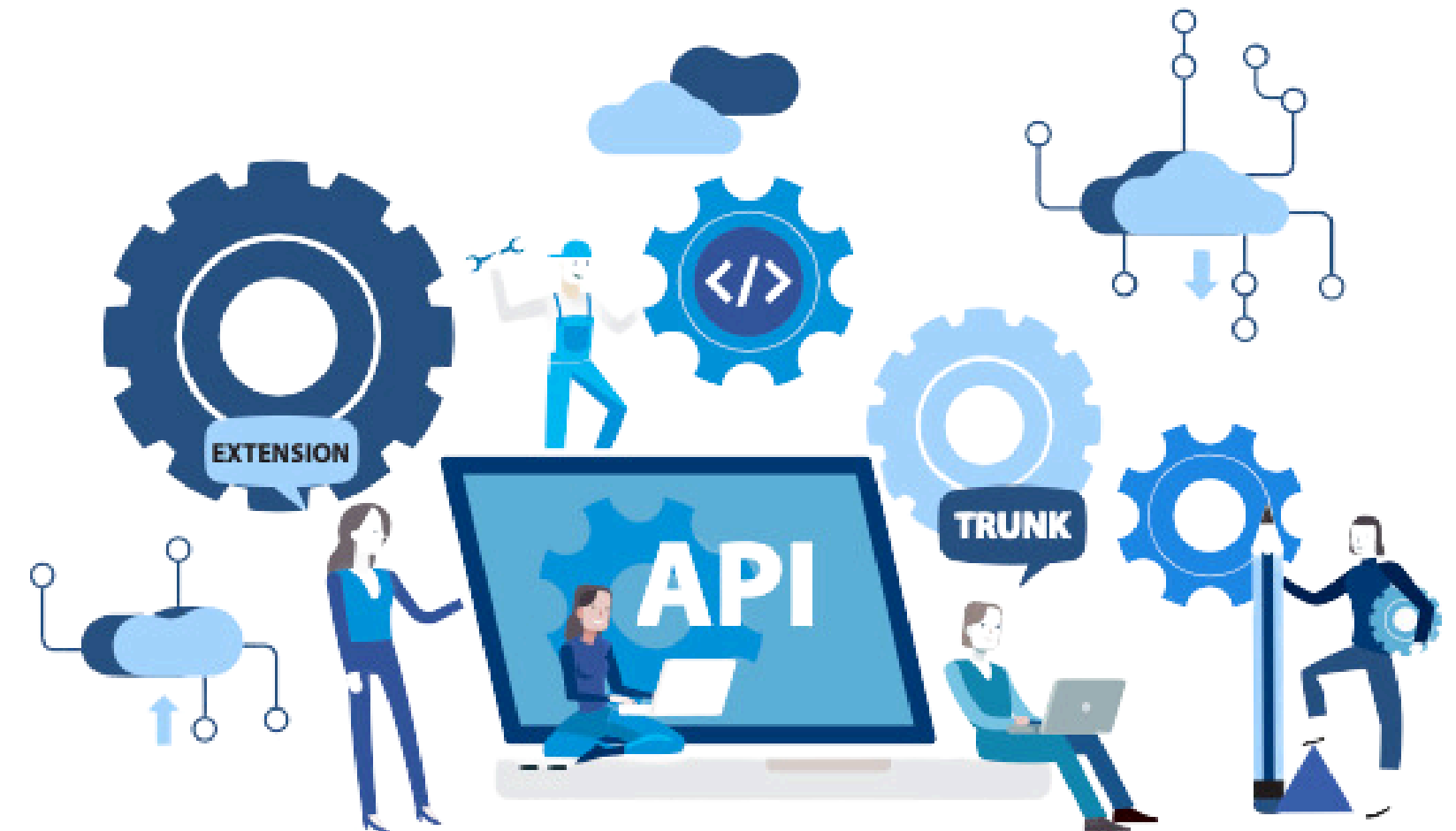
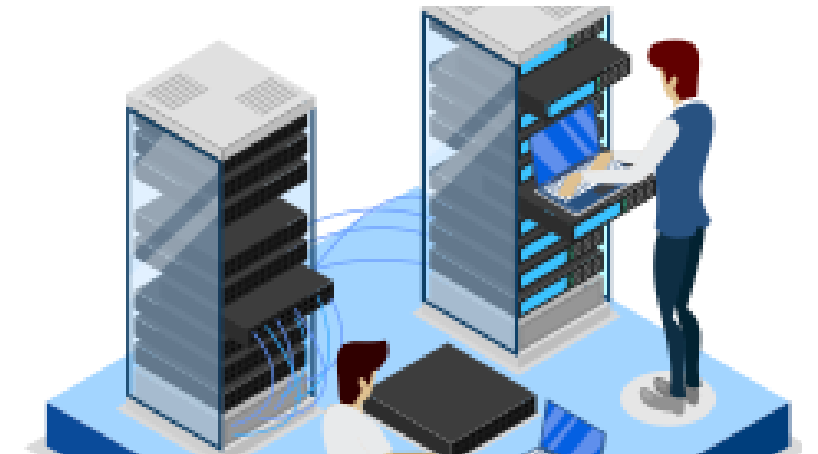
Connect your applications to Bluehub UC with Bluehub UC's simple, powerful, and secure application programming interface (API). You can access Extensions, Trunks, DIDs, Ring Groups, IVRs, and more via HTTP protocol.

DELIVERY METHOD

Flexible delivery methods are what make Bluehub UC so popular on the market. To meet the needs of our customers, we developed three different delivery methods:

INSTALLATION MEDIA

CERTIFIED APPLIANCES



24/7 EXPERT SUPPORT AT YOUR FINGERTIPS

Rest assured with round-the-clock support. Our highly trained experts are always available to address any PBX system-related queries, ensuring seamless operations and peace of mind.

SCALABILITY FOR EVOLVING DEMANDS

Align your Bluehub UC edition with your company's growth trajectory. While scalability has its limits, Bluehub UC keeps pace to accommodate the ever-evolving demands of SMBs.

VERSATILE BRANDING OPTIONS

Elevate your market presence with Bluehub UC's versatile branding options. Stand out from the competition, bolster brand recognition, and attract new customers effortlessly.





24/7 EXPERT SUPPORT AT YOUR FINGERTIPS

Rest assured with round-the-clock support. Our highly trained experts are always available to address any system-related issues or questions that you may have, ensuring seamless operations and peace of mind.

Phone

+ 1300 868 178

Email Address

sales@bluehubuc.com.au

